



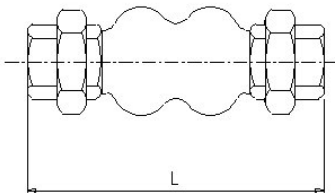
## EXPANSION JOINTS

### GENEBRE PART: 2830N DOUBLE WAVE RUBBER EXPANSION JOINT, NPT



#### SPECIFICATIONS

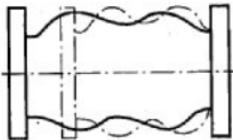
|   |  |
|---|--|
| 1 | Helps reduce noise and absorbs vibration                           |
| 2 | Working temp range $-10^{\circ}\text{C}$ to $+105^{\circ}\text{C}$ |
| 3 | Pressure 400mmHg vacuum to 10 Bar                                  |
| 4 | Allows axial and lateral movement                                  |
| 5 | EPDM body, galvanised steel ends                                   |



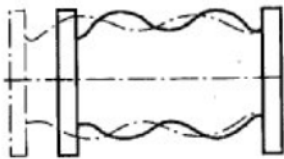
#### DIMENSIONS

| AVOL<br>REF | SIZE   | L<br>mm | Wt<br>Kg |
|-------------|--------|---------|----------|
| 2830N 05    | 3/4"   | 200     | 0.71     |
| 2830N 06    | 1"     | 200     | 1.09     |
| 2830N 07    | 1 1/4" | 200     | 1.31     |
| 2830N 08    | 1 1/2" | 200     | 1.78     |
| 2830N 09    | 2"     | 200     | 2.65     |

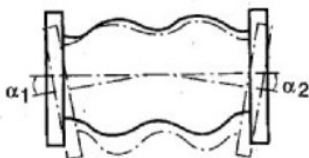
A



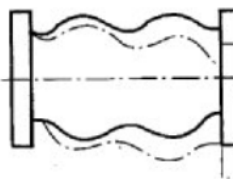
B



C



D



|          | Axial<br>Compression | Axial<br>Elongation | Angular<br>Deflection | Lateral<br>Displacement |
|----------|----------------------|---------------------|-----------------------|-------------------------|
|          | A                    | B                   | C                     | D                       |
|          | mm                   | mm                  | $\alpha_1 + \alpha_2$ | mm                      |
| 2830N 05 | 22                   | 5                   | $25^{\circ}$          | 22                      |
| 2830N 06 | 22                   | 5                   | $25^{\circ}$          | 22                      |
| 2830N 07 | 22                   | 5                   | $20^{\circ}$          | 22                      |
| 2830N 08 | 22                   | 5                   | $15^{\circ}$          | 22                      |
| 2830N 09 | 22                   | 5                   | $12^{\circ}$          | 22                      |